

Vital Signs  
A GE Healthcare Company

# Single Patient Use Temperature Probes

now including the VitalTemp™  
part of our temperature  
management family of solutions

## Make the connection

- Latex-free materials help ensure patient safety
- Temperature probes and cables from GE Healthcare help you effectively utilize our patient monitoring technologies
- Application areas include fingers, toes, ears, esophagus, nasopharynx, rectum, and bladder

## Single-source simplicity

Purchasing accessories and supplies from a single source helps you process fewer purchase orders, research less vendors, and review less contracts. It also translates to cost-effectiveness through customized supply contracts. And, when your single source is GE Healthcare, you have the benefit of a dedicated sales and support organization, as well as a global resource and distribution network. Make the connection with accessories and supplies from GE Healthcare.



imagination at work



## Disposable temperature probes

Product type	Reorder number	Description	Dimensions	Units / case
General Purpose Probes	1016	9 Fr. General purpose	Sensor dia.: 3 mm/0.12 in	50
	M1024229	9 Fr. General purpose	Sensor dia.: 3 mm/0.12 in	25
	1026	9 Fr. General purpose	Sensor dia.: 3 mm/0.12 in	50
	M1024231	12 Fr. General purpose	Sensor dia.: 4 mm/0.16 in	25

### General Purpose Probes

General purpose probes used in routine monitoring throughout the hospital measure core body temperature and are made from non-porous material. They provide versatile applications including oral and rectal introduction.



General purpose probes can be placed in the esophagus, nasopharynx, or rectum.

Skin Probes	1017	Skin Probes	Sensor dia.: 25 mm/1.0 in Sensor thickness: 46.5 mm/1.83 in	50
	M1024222	Skin Probes	Sensor dia.: tape 25 mm/0.98 in	25
	1027	Skin Probes	Sensor dia.: 25 mm/1.0 in Sensor thickness: 46.5 mm/1.83 in	50

### Skin Probes

Skin probes measure surface temperature and are versatile enough for use in many different care areas and patient applications. These probes use a non-irritating and non-sensitizing adhesive for attachment to the skin. Mylar backing protects the probe from cooling air currents, increasing placement options.



Skin probes can be placed on the finger, toe, or in the armpit.

Tympanic Probes	M1024233	Tympanic – with foam	Cotton ball dia.: conforms to ear	25
	M1024237	Tympanic – without foam	Cotton ball dia.: conforms to ear	25

### Tympanic Probes

With a cotton tip for easy, secure placement, tympanic probes are designed for atraumatic introduction into the auditory canal. Optional foam tip helps reduce the impact of ambient air. These probes non-invasively provide a reflective measurement of the body's core temperature and are for use in anesthesia, as well as the burn unit, emergency room, NICU and PICU.

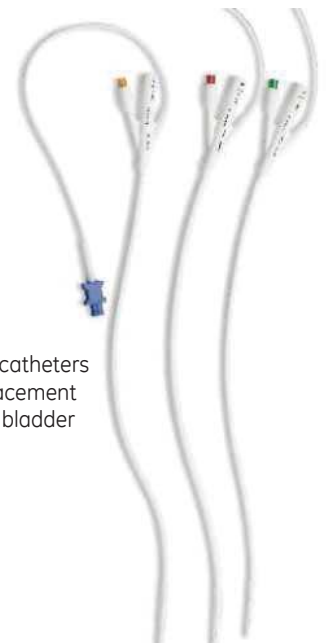


Tympanic probes for placement in the auditory canal

Foley Catheter with Temperature	M1024239	14 Fr. Foley Catheter	Tube dia.: 4.7 mm/0.19 in Cuff capacity: 5-15 mL	25
	M1024242	16 Fr. Foley Catheter	Tube dia.: 5.3 mm/0.21 in Cuff capacity: 5-15 mL	25
	M1024244	18 Fr. Foley Catheter	Tube dia.: 6.2 mm/0.24 in Cuff capacity: 5-15 mL	25

### Foley Catheters with Temperature

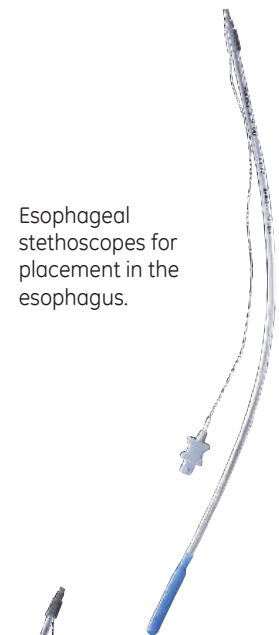
Foley catheters allow for urinary draining while simultaneously monitoring the core body temperature. Exceptional for the surgical setting where one catheter/temperature probe can be used before, during and after surgery. Color-coded hub allows for quick size identification. Foley catheters are made of 100% silicone.



Foley catheters for placement in the bladder

- Products marked with this color are sold surgically clean and use a 400 Series thermistor.
- Products marked with no color are sold sterile and use a 400 Series thermistor.
- Products marked with this color are sold surgically clean and use a 700 Series thermistor.
- Products marked with this color are sold non-sterile and use a 400 Series thermistor.

Product type	Reorder number	Description	Dimensions	Units / case
9 Fr Esophageal Stethoscope with Temperature	1013	9 Fr Esophageal Stethoscope	Tube dia.: 3 mm/0.12 in Cuff dia.: 5 mm/0.2 in Ear piece dia.: 6.4 mm/0.25 in	50
	M1024205	9 Fr Esophageal Stethoscope	Tube dia.: 3 mm/0.12 in Cuff dia.: 4.6 mm/0.18 in Ear piece dia.: 6.4 mm/0.25 in	25
	1023	9 Fr Esophageal Stethoscope	Tube dia.: 3 mm/0.12 in Cuff dia.: 5 mm/0.2 in Ear piece dia.: 6.4 mm/0.25 in	50
12 Fr Esophageal Stethoscope with Temperature	1010	12 Fr Esophageal Stethoscope	Tube dia.: 4 mm/0.16 in Cuff dia.: 6.1 mm/0.24 in Ear piece dia.: 6.4 mm/0.25 in	50
	M1024212	12 Fr Esophageal Stethoscope	Tube dia.: 4 mm/0.16 in Cuff dia.: 5.5 mm/0.22 in Ear piece dia.: 7.7 mm/0.30 in	25
	1020	12 Fr Esophageal Stethoscope	Tube dia.: 4 mm/0.16 in Cuff dia.: 6.1 mm/0.24 in Ear piece dia.: 6.4 mm/0.25 in	50
18 Fr Esophageal Stethoscope with Temperature	1011	18 Fr Esophageal Stethoscope	Tube dia.: 6 mm/0.24 in Cuff dia.: 8 mm/0.32 in Ear piece dia.: 6.4 mm/0.25 in	50
	M1024215	18 Fr Esophageal Stethoscope	Tube dia.: 6 mm/0.32 in Cuff dia.: 8.8 mm/0.35 in Ear piece dia.: 9.4 mm/0.37 in	25
	1021	18 Fr Esophageal Stethoscope	Tube dia.: 6 mm/0.24 in Cuff dia.: 8 mm/0.32 in Ear piece dia.: 6.4 mm/0.25 in	50
24 Fr Esophageal Stethoscope with Temperature	1012	24 Fr Esophageal Stethoscope	Tube dia.: 8 mm/0.32 in Cuff dia.: 11.5 mm/0.45 in Ear piece dia.: 6.4 mm/0.25 in	50
	M1024218	24 Fr Esophageal Stethoscope	Tube dia.: 8 mm/0.32 in Cuff dia.: 10.7 mm/0.42 in Ear piece dia.: 11.7 mm/0.46 in	25
	1022	24 Fr Esophageal Stethoscope	Tube dia.: 8 mm/0.32 in Cuff dia.: 11.5 mm/0.45 in Ear piece dia.: 6.4 mm/0.25 in	50



Esophageal stethoscopes for placement in the esophagus.



Esophageal stethoscope with 400 or 700 Series thermistors

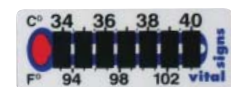
### Esophageal Stethoscope with Temperature

Excellent acoustic characteristics deliver enhanced heart and breath sounds. Exceptional for the surgical setting, esophageal stethoscopes monitor heart and respiratory sounds as well as critical core temperature in anesthetized patients.

Liquid Crystal Temperature Strips	1047	Liquid Crystal Temperature Strips offset to core temperature	48 X 9 mm (1.88 X .75 in)	100
-----------------------------------	------	--	---------------------------	-----

### Liquid crystal thermometer

Accurately trends the patient's skin temperature, displaying easy-to-read graphics in both Centigrade and Fahrenheit.



Liquid crystal thermometers

- Products marked with this color are sold surgically clean and use a 400 Series thermistor.
- Products marked with no color are sold sterile and use a 400 Series thermistor.
- Products marked with this color are sold surgically clean and use a 700 Series thermistor.
- Products marked with this color are sold clean and use no thermistor.

## Reusable temperature cables

Product type	Reorder number	Description	Cable length	Units/case
Direct connect cables (connects disposable probes to non-GE monitor)	1331	Rifle Shot Cable; for some Hewlett Packard® monitors	1.0 m/3.1 ft	1 unit
	1332	Phono Plug Cable; for other 400 Series monitors	1.0 m/3.1 ft	1 unit
	1333	Phono Plug Cable; for 700 Series monitors	1.0 m/3.1 ft	1 unit
Trunk cables (connects probes to GE monitor)	2016998-001	Dual Temperature Care cable (connects to Interconnect cables)	0.5 m/1.7 ft	1 unit
	2021700-001	Single Temperature Care cable (connects to Interconnect cables)	0.5 m/1.7 ft	1 unit
	2021701-001	Temperature Care cable (connects directly to disposable probes no Interconnect cable needed)	3.6 m/12 ft	1 unit
Interconnect cables (connects disposable probes to older style GE trunk cable ending with phono jack)	165640	Interconnect cable for disposable probes	1.3 m/4.3 ft	1 unit
	165641	Interconnect cable for disposable probes	2.8 m/9 ft	1 unit
	9445-801	Interconnect cable for disposable probes	3.6 m/12 ft	1 unit

■ Products marked with this color are for use with 400 Series thermistor probes.

■ Products marked with this color are for use with 700 Series thermistor probes.



GE Healthcare provides transformational medical technologies and services that are shaping a new age of patient care. Our broad expertise in medical imaging and information technologies, medical diagnostics, patient monitoring systems, drug discovery, biopharmaceutical manufacturing technologies, performance improvement and performance solutions services help our customers to deliver better care to more people around the world at a lower cost. In addition, we partner with healthcare leaders, striving to leverage the global policy change necessary to implement a successful shift to sustainable healthcare systems.

Our "healthymagination" vision for the future invites the world to join us on our journey as we continuously develop innovations focused on reducing costs, increasing access and improving quality and efficiency around the world. For more information about GE Healthcare, visit our website at [www.gehealthcare.com](http://www.gehealthcare.com).

Vital Signs, Inc.  
A GE Healthcare Company  
20 Campus Road  
Totowa, NJ 07512  
USA

[www.vital-signs.com](http://www.vital-signs.com)



© 2009 General Electric Company – All rights reserved. General Electric Company reserves the right to make changes in specifications and features shown herein, or discontinue the product described at any time without notice or obligation. Contact your GE Representative for the most current information.

GE, GE Monogram, Vital Signs and VitalTemp are trademarks of General Electric Company.

Hewlett Packard is a trademark of Hewlett-Packard Development Company, L.P.

Vital Signs, Inc., a General Electric company, doing business as GE Healthcare.

L2005 Temp Probe Brochure EN Rev. Rel. 05/2009

ACCC-0293-09.09-EN-US