

LIMB- Θ TM Ventilator Circuit

*High Performance Passive Humidification
in a Single Tube Ventilator Circuit...*

NEW!!!

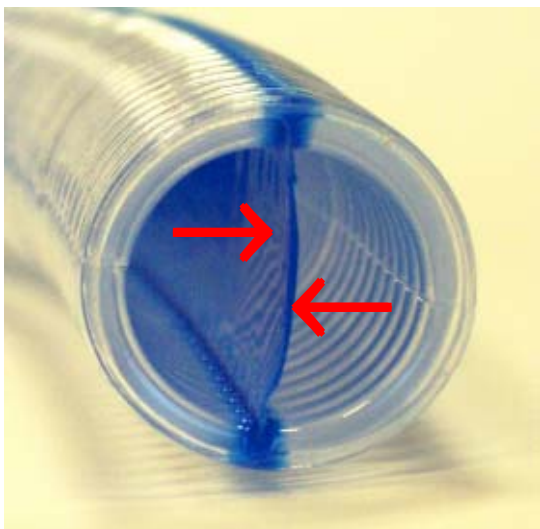
Introducing Limb- Θ ST (Single Tube)



- Amplified passive humidification
- 25% Decrease in weight of the entire airway, reducing the risk of unplanned extubation

● A single lumen tube that consolidates your inventory by accommodating both adult and pediatric patients

● Unique design results in a decreased circuit compliance - *volume set is volume delivered*



Smooth common wall reduces turbulent flow, resulting in resistances comparable to a traditional circuit.

The Ultimate Passive Humidification System

Vital Signs Limb- Θ ST --- We do it YOUR Way!!



Available With or Without the Following:

- Connecting Elbows or End Cap

Flex Elbow



Plain Elbow



- Bacterial/Viral Filters #303



- MDI Adapter #4300MDE



- HCH & HCH/Filter Combinations
#5708HEPA (HCH/HEPA)
#5708 (HCH/Filter)
#5700FLEX (HCH)
#5702 (HCH)

- Proximal Line
- Exhalation Valve

| Product Specifications | | | | | | | | | | | |
|---------------------------------------------------------------------------------|--------------------------------------------------------------------------------------------------------------------------------------------------------------------------------|-----------|-----|-----------|------|-----------|------|-----------|------|------------|------|
| Product Description | Limb- Θ TM Ventilator Circuit | | | | | | | | | | |
| Length | 72" | | | | | | | | | | |
| Total Circuit Weight | 170g | | | | | | | | | | |
| Compliance of Circuit @ 100 cm H ₂ O ¹ | .93 ml / cmH ₂ O | | | | | | | | | | |
| Insp. & Exp. Resistance at Various Flow Rates ¹ (cmH ₂ O) | Length 72" | 20L / min | | 30L / min | | 40L / min | | 50L / min | | 60 L / min | |
| | | I | E | I | E | I | E | I | E | I | E |
| | | .46 | .57 | 1.06 | 1.24 | 1.80 | 2.12 | 2.74 | 3.28 | 3.69 | 4.39 |
| Circuit Materials | Corrugated Tubing and Septal Wall – Polyethylene / EVA 22mm Connectors – Medical Grade Polypropylene; Cuff Band – Polyisoprene Expandable Extension Hose - Polypropylene | | | | | | | | | | |
| Ordering Information | | | | | | | | | | | |
| Product Number | VJNXXXXX (Basic configuration; Code assignment depends on configuration) | | | | | | | | | | |
| Quantity | 20/Case | | | | | | | | | | |

1. Test Data on File

Please call us to find out how Vital Signs, Inc. can provide an opportunity for you and your hospital to try the new Limb- Θ ST !!!